

THESE PLANS ARE THE INTELLECTUAL PROPERTY OF IMBUE DESIGN, LLC AND ARE PROTECTED BY COMMON LAW, STATUTORY AND OTHER RESERVED RIGHTS INCLUDING, BUT NOT LIMITED TO, COPYRIGHT. THESE DRAWINGS MAY NOT BE REPRODUCED OR USED FOR ANY PURPOSE WITHOUT THE EXPLICIT WRITTEN CONSENT OF IMBUE DESIGN, LLC.

imbue design

801.477.4174
949 Denver Street
SLC, Utah 84111

357 Parleys Road
Park City, Utah 84098

silver creek residence



H1 DESIGN FEATURES

SOUTHWARD : Open the house and main living space toward the backside view of the Wasatch mountains, and gain the free heating capabilities of the winter sun.

SINGLE SHED : The simplicity of a mono-pitch shed roof recalls the vernacular architecture of what was once rural Utah. Starting low upon entry, the roof expands upward in the living spaces and out toward the views.

DECKS : Three separate decks extend the interior living space toward the outdoors. Facing varied cardinal directions, each deck can serve different seasons or parties. Cantilevered above the ground, the platforms provide a floating feeling, as well as provide protection above the winter snow fall.

FUNCTION : Divided by the main kitchen, dining and living spaces, the master bedroom gets its own wing of the house, while your temporary guests are vanquished to the other wing of the house. In an effort to consolidate space and finishes, the two guest bedrooms share one bathroom, which serves more of a public function.

MATERIALS : Locally sourced western red cedar clads the perimeter of the house and garage, while a simple standing seam metal roof provides a 30-year lifespan, ensuring very little maintenance.

INSULATE : Given the extreme temperature swings between the seasons, highly insulate the house with continuous exterior insulation. A thick ceiling planes allow us to pack a tightly sealed building envelope with enough insulation to keep you cool in the summer and warm in the winter.

DETACHED GARAGE : Speaking to the simple shed roof design of the house, the 2-car, detached garage provides additional storage, houses county collected recycling and garbage, and can be an easy phase two project if the house occupies most the project budget.

PHOTOVOLTAICS : Living on the garage with the roof pitched in the correct orientation, photovoltaic panels provide the opportunity for your own little power plant, offsetting, if not negating the electrical company's utility monopoly. Again, an easy phased element which can be planned now.

GAS FIREPLACE : We know it wasn't a prerequisite, but it will add a little ambiance and warmth on those cold winter nights.



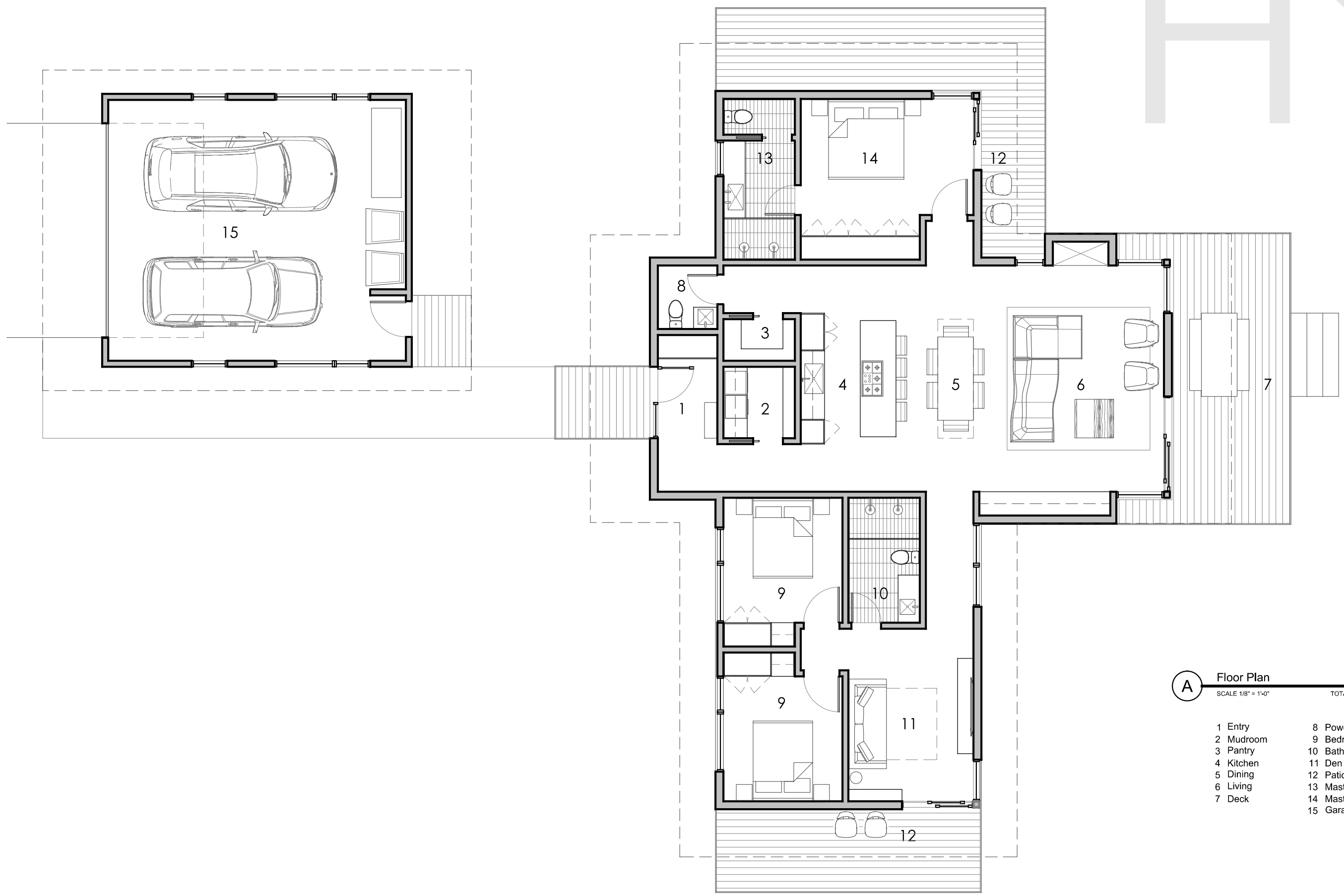
THESE PLANS ARE THE INTELLECTUAL PROPERTY OF IMBLUE DESIGN, LLC AND ARE PROTECTED BY COMMON LAW, STATUTORY AND OTHER RESERVED RIGHTS INCLUDING, BUT NOT LIMITED TO, COPYRIGHT. THESE DRAWINGS MAY NOT BE REPRODUCED OR USED FOR ANY PURPOSE WITHOUT THE EXPLICIT WRITTEN CONSENT OF IMBLUE DESIGN, LLC.

imblue design

801.477.4174
949 Denver Street
SLC, Utah 84111

357 Parleys Road
Park City, Utah 84098

silver creek residence



A Floor Plan
SCALE 1/8" = 1'-0" TOTAL : 1,750 SQ FT

- 1 Entry
- 2 Mudroom
- 3 Pantry
- 4 Kitchen
- 5 Dining
- 6 Living
- 7 Deck
- 8 Powder
- 9 Bedroom
- 10 Bathroom
- 11 Den
- 12 Patio
- 13 Master Bathroom
- 14 Master Bedroom
- 15 Garage